

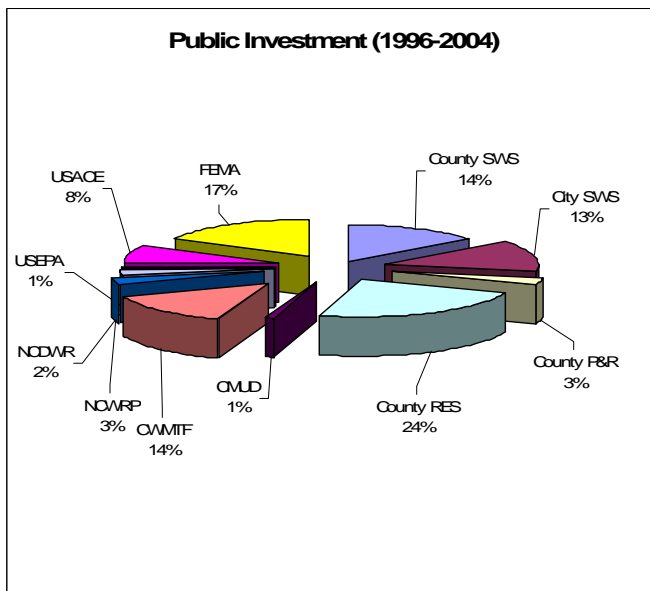
PROGRAM MANAGEMENT / SITE RE-DEVELOPMENT

Little Sugar Creek Environmental Restoration Initiative: conceived the vision and name --- for a watershed-wide restoration effort; this **\$50 million program** was successfully financed by numerous large grants and co-funding agreements that I negotiated, authored and administered.



Little Sugar Creek Environmental Restoration Initiative Phase 1 / Hidden Valley Ecological Garden: complete responsibility for project conception, visualization, concept, inter-departmental city-county cost-sharing, grant applications, funding, consultant management, design oversight, budget administration, consultant selection, contractor bidding, landowner & media relations, fee simple acquisition, roadway abandonment, land surveys, permitting in the evolving wetland creation & stream restoration field where criteria were not yet established by USEPA, FEMA, USACE or state for 3,000± feet of stream channel and 13± acres of newly created wetlands. (\$4M)

Little Sugar Creek Environmental Restoration Initiative Phase 2 / Freedom Park & Dam Decommissioning: complete responsibility for project conception, visualization, concept, inter-departmental city-county cost-sharing, funding via NCEEP state sources, consultant management, design oversight, budget administration, consultant selection, contractor bidding, landowner & media relations, creating and permitting newly-developed erosion control concepts for 4,500± feet of stream channel. Included dam removal (sluice gate), streambank liner demolition, Mecklenburg County Park & Recreation Department coordination with on-going events, bedrock blasting, greenway trail design, signage design, public meetings. (\$1½M)



PROJECT	TOTAL
Edwards Branch Watershed Restoration	\$4,400,000
Hidden Valley Ecological Garden	\$3,928,000
Belmont Branch Ecological Garden & Trail	\$3,185,000
Westfield Road Restoration & Greenway Trail	\$9,650,000
Freedom Park Restoration & Greenway Trail	\$1,800,000
Freedom Park Dam Removal	\$40,000
Freedom Park Armor Demolition	\$260,000
State Line / TPL / Regent Land Acquisition	\$2,500,000
Kings Drive Daylighting	\$12,050,000
USACE 1135	\$3,000,000
USACE 206	\$1,800,000
Huntingtowne Farms Park Restoration & Trail	\$1,900,000
Briar Creek Restoration	\$1,700,000
FEMA HMGP Buyout Program	\$2,000,000
Hope Park Branch Restoration	\$800,000
Dairy Branch	\$500,000
Dairy Branch / Magnolia-Kirkwood	\$900,000
TOTAL	\$50,413,000

ENVIRONMENTAL RESTORATION / BMP / SWPPP / BIO-RETEN

McAlpine Creek Streambank Stabilization & Habitat Enhancement: consultant management, design oversight, budget administration, consultant selection, contractor bidding, landowner & media relations, easement acquisition, permitting in the newly-evolving stream restoration field where criteria and rules were not yet established by USEPA, FEMA, USACE or state for 13,000± feet of stream channel. (*\$2± million construction value*)

Briar Creek Streambank Stabilization & Habitat Enhancement: consultant management, design oversight, budget administration, consultant selection, contractor bidding, landowner & media relations, easement acquisition, permitting in the evolving stream restoration field where criteria were not yet established by USEPA, FEMA, USACE or state for 9,000' of channel. (*\$1½M*)

Little Sugar Creek Streambank Stabilization & Soil Bioengineering Project / North Davidson Street: consultant management, design oversight, budget administration, construction inspection, contract administration for 5,000± feet of stream channel. (*\$2+ million construction*)

Little Sugar Creek Streambank Stabilization & Soil Bioengineering Project / Huntingtowne Farms Park: consultant management, design oversight, budget administration, construction inspection, contract administration for 5,000± feet of stream channel. (*\$1± million*)



Little Sugar Creek Environmental Restoration Initiative Phase 1 / Hidden Valley Ecological Garden: complete responsibility for project conception, visualization, concept, inter-departmental city-county cost-sharing, grant applications, funding, consultant management, design oversight, budget administration, consultant selection, contractor bidding, landowner & media relations, fee simple acquisition, roadway abandonment, land surveys, permitting in the evolving wetland creation & stream restoration field where criteria were not yet established by USEPA, FEMA, USACE or state for 3,000± feet of stream channel and 13± acres of newly created wetlands. (*\$4M*)

Little Sugar Creek Environmental Restoration Initiative Phase 2 / Freedom Park & Dam Decommissioning: complete responsibility for project conception, visualization, concept, inter-departmental city-county cost-sharing, funding via NCEEP state sources, consultant management, design oversight, budget administration, consultant selection, contractor bidding, landowner & media relations, creating and permitting newly-developed erosion control concepts for 4,500± feet of stream channel. Included dam removal (sluice gate), streambank liner demolition, Mecklenburg County Park & Recreation Department coordination with on-going events, bedrock blasting, greenway trail design, signage design, public meetings. (*\$1½M*)

Little Sugar Creek Environmental Restoration Initiative Phase 3 / Westfield Road / Myers Park Manor: shared responsibility for project conception, visualization, concept, inter-departmental city-county cost-sharing, grant applications, funding, consultant selection, creating and permitting newly-developed erosion control concepts for 5,000' of stream channel. Included Mecklenburg County Park & Recreation Department coordination, greenway trail design, signage design, public meetings. (*\$3M*)

Little Sugar Creek Environmental Restoration Initiative Phase 4 / Belmont Avenue Ecological Garden: complete responsibility for project conception, visualization, concept, inter-departmental city-county cost-sharing, grant applications, funding, pre-permitting in the newly-evolving wetland creation field where criteria and rules were not yet established by USEPA, FEMA, USACE or state for 4,000' of stream channel and 5± acres of newly created wetlands. (*\$2½M*)

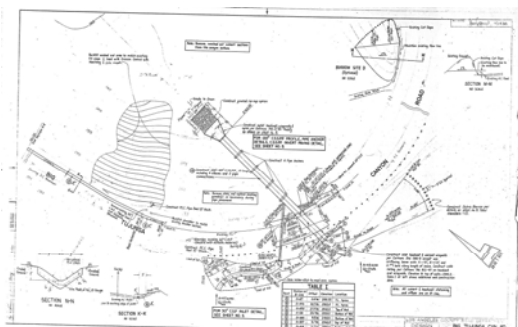
MOUNTAIN ROAD



Kanan & Kanan Dume Roads (Malibu) from Pacific Coast Highway to Ventura (101) Freeway: vertical and horizontal alignment design, including grading (slide stabilization), crib-wall layout, hydrology, hydraulic calculations, tunnel liner design, tunnel approach geometrics, slope subdrains, landslide clearing (\$2,000,000 construction value)

Liberty Canyon Road (City of Agoura) at Ventura (101) Freeway: design of 150' vertical cut adjacent to freeway, on/off ramp; realignment design, vertical and horizontal roadway design parallel to freeway; drainage design. (\$350,000 construction value)

San Francisquito Canyon Road at MP 8.59 in the Angeles National Forest: 2000' of roadway realignment (around slide) design and crib-wall plan and profile, slope protection and river bed stabilization; preliminary horizontal and vertical alignment studies for extension of road from northerly terminus for 6 miles included mass haul diagrams and extensive cross section work to address Forest Service concerns. (\$200,000 construction value)



Big Tujunga Canyon Road at MP 8.94 & MP 4.60: road washout restoration, hydrology, hydraulic, structural and cavitation calculations; plan and profile design and drafting; coordination with USFS, Flood Control District & County Fire Department. (\$350,000 construction value)

Las Virgines Canyon Road (Malibu): realignment studies, centerline geometric design, typical section design, double barrel RCB design, hydrology studies and pavement widening. (\$150,000 construction value)

HIGHWAY

Valley Boulevard, CC6256 for LACDPW (Cities of Industry and Walnut) from Fairway Drive to Suzanne Road: responsible for QA / QC, contract management, design details of 2± miles of urban street design, including pavement, median and parkway reconstruction; drainage design adjacent to railroad right-of-way; right-of-way mapping and acquisition; cost estimates for 3 jurisdictions, signing and striping plans. (\$1,400,000 construction value)

Alameda Street, CC3605 for LACDPW (City of Compton) from Dixon Street to Oaks Street: designed and drafted one mile of urban street and parkway reconstruction adjacent to railroad right-of-way, including railroad crossing design, utility research and drainage inlet design, cost estimates and typical sections. (\$700,000 construction value)

108th Street, CC3578 for LACDPW (Unincorporated County): designed and drafted ¾ mile of urban street & parkway reconstruction in residential area; typical section design, cost estimates.

Florence Avenue, CC2053N for LACDPW (City of Bell) from California Avenue to East of Long Beach (710) Freeway: designed and drafted 2 miles of urban street and parkway reconstruction and resurfacing, cost estimates for three separate jurisdictions

STORM WATER / DRAINAGE / EROSION CONTROL

Cabazon Indian Reservation Tract 0001, Indian Sands Development, Coachella Valley, CA: storm drain hydrology (RCFC&WCD RATRV) & hydraulic (LACFCD WSPG) calculations, report and system layout for Riverside County Flood Control & Water Conservation District approval for over 1000 single family homes.

Storm Drain Master Plan Extension (City of Palmdale) from Ave. S-12 to Barrel Springs Road: preliminary vertical/horizontal alignment design and ROW acquisition for 8500' of 81" RCP.

Declez Channel Relief Drain (City of Fontana), Jurupa Avenue at Oleander Avenue: vertical & horizontal alignment design, hydraulic & structural calculations for 1000' of 4.5' x 9' RCB.

2 Trapezoidal Channels into Salt Creek Channel (Riverside County) in the vicinity of Newport & Murrieta Roads in Sun City: hydraulic calculations, vertical and horizontal alignment design, utility relocations and hydrology studies for 188 and 130-acre watersheds (416 & 190 cfs), and 51" RCP design (Tracts 22210, 22209, 23314, 22038). (\$400,000 construction value EACH)



120-inch corrugated structural steel plate pipe and 60-inch CMP design (LACDPW) in the Angeles National Forest on Big Tujunga Canyon Road at MP 8.94: road washout restoration, hydrology, hydraulic, structural and cavitation calculations; plan and profile (45° angle) design and drafting; coordination with USFS, Flood Control District & County Fire Department.

Assessment District AD-79 Storm Drain Analysis (City of Corona) for Tracts 20775, 20986, 26125 and Riverside (91) Freeway RCB: hydrology study, hydraulic calculations, vertical and horizontal alignment design for 3000' of 36"-90" RCP and alternate designs; sizing of roadways & drainage facilities; plan and profile layout; consultations with other engineers, city staff & owners. (\$1.5M construction value)

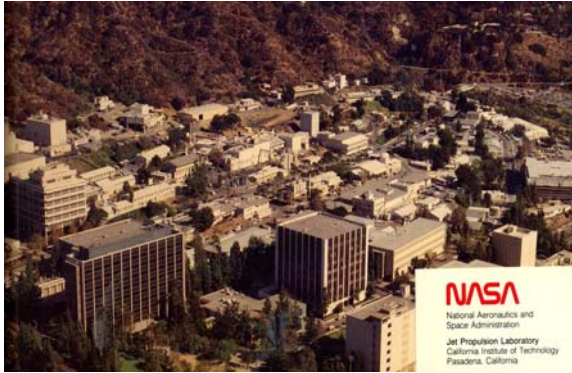
Drainage and Stability Study of Big Tujunga Canyon Wash between Foothill Boulevard and Foothill (210) Freeway (City of Los Angeles): hydrology study, fireshed forensic / historical analysis, channel lining study and cost estimates, scour and deposition analysis, consultations with California State University staff and final recommendations in report format.

Ronda Avenue Drainage Channel Study from McAlpine Creek to Sardis Road (City of Charlotte, NC): as a project manager, prepared a planning report for channel and culvert improvements, retention basins, utility relocations, cost/benefit analysis, residential condemnations (structure demolition), homeowner meetings and public hearings in the Stonehaven subdivision. This project involved modeling the existing drainage basin and developing alternatives to alleviate flooding of homes using HEC-1, HEC-2 and HY-8 software. This drainage basin consisted of approximately 640 acres and unimproved channel in an urban subdivision.

Cavendish/Cloister Flood Study and Capital Improvement Project, (City of Charlotte, NC): as project manager for a unique two-tributary drainage basin separated by a man-made lake, prepared a planning report for channel and culvert improvements, redesign of lake functions, utility relocations, cost/benefit analysis, public hearings and recommendations for final design in the Cloisters subdivision. This project involved modeling the existing drainage basin and developing alternatives to alleviate flooding of homes using HEC-2, SWMM and HY-8 software. This drainage basin was 600± acres in an urban subdivision. (\$1,400,000 construction value)

Daniel Stowe Botanical Gardens, (City of Belmont, NC): BMP's, calculations and design temporary, intermediate and final erosion control plans required during mass grading of 500-acre site, including 20 detention basins and discharge points into Lake Wylie (drinking water supply).

UTILITY / MASTER PLANNING



Utilities Master Plan (NASA / Jet Propulsion Laboratory): research of population studies and existing facilities inventory; projected needs at ultimate "build-out"; location and sizing design of sewer, domestic water, natural gas, oil, cooling tower water, gaseous and liquid nitrogen storage and distribution facilities, electrical, communications and security system layout for compilation into master plan report. (\$80,000 design fee)



16" H.P. Gas Main Relocation in Pacific Coast Highway through Dana Point & Laguna Beach (Southern California Gas Company): utility corridor planning, route selection, vertical and horizontal alignment design, Caltrans permitting, traffic control plans, prepared jacked boring plans, calculations, details, specifications, utility research & relocation investigation for 8± miles of new steel natural gas main. (\$4+M construction value)

Bonelli Park Bike Path, CC2610N for LACDPW along Puddingstone Drive: 1.1 miles of bikeway & horse trail design including horizontal & vertical alignment, safety devices, typical sections, grading & drainage. (\$100,000 construction value)

Alleghany County Industrial Park, Phase 1 Environmental Site Assessment (ESA): prepared a conceptual grading plan for a 133-acre rural hilltop site in the Blue Ridge Mountains to be developed into an industrial park; prepared a phase 1 environmental site assessment report



The Ocean Club, formerly Sunset Bay Towers (Baywood Development), 1290 East Ocean Boulevard in the City of Long Beach: 16-story post-tensioned concrete high-rise condominium project located directly on the beach; field engineer in charge of all building vertical and horizontal control lines using Wilde T-2 theodolite and Zeiss level to adhere to architectural and structural plans; also in charge of all field modifications, architect and structural engineer contact for approval of alterations, field inspection of reinforcing steel, post-tension cables and concrete forms, shop-drawing review and processing, contractor payment approvals and contract revisions.

Beaver Dam Creek Tributary - Stream Restoration from Dixie River Rd. to I-485, Charlotte, NC: procure option agreements, permanent conservation easements and land owner negotiation with private and county land owners; utility coordination; preparation of legal documents.

PERMITTING

North Lake Mall, Charlotte, NC: forensic review of environmental permitting process for regional mall at request of private client via attorney.

Modification to San Timoteo Wash Floodway, Redlands, CA: FEMA permitting, report and HEC-RAS calculations.

Four Mile Creek Stream Restoration, Charlotte, NC: obtained Mecklenburg County Floodlands Development Permit and variance to the local floodplain ordinance; negotiated satisfactory resolution of CMUD concerns; obtained additional stream length from two upstream property owners, including county; construction document review for QA/QC and time/cost savings including contractor contact; coordinate w/ NCEEP staff for time extension, additional length, NEPA / FEMA.

Gum Branch at Long Creek at I-485 / Floodplain Fill / NCDOT #R-2248C, Charlotte, NC: perform HEC-RAS calculations to support a Mecklenburg County Floodlands development permit application for illegal floodplain filling by client (Charlotte-Mecklenburg Utilities).

BRIDGE / RAILROAD



CSX Derailment and Culvert Collapse over Little Sugar Creek (Charlotte, NC): Coordinated County storm water and park and recreation department interests during spill cleanup and construction of new bridge and abutments after "100-year" flooding from Hurricane Danny. Daily journal and photographic log for permitting within the floodplain and subsequent revised HEC-2 hydraulic modeling for FEMA / NPDES. Subsequent interview and article in Rail News magazine (Sept. 1998).

East Las Palmas Drive bridge over Union Pacific Railroad (City of Fullerton): geometric alignment of 2-lane narrow roadway (horizontal & vertical curves) for new bridge; demolition of existing structure and foundations.

SPECIALTY PROJECTS

For **LENNAR HOMES**, while on assignment with a consulting firm, had complete responsibility and oversight of **letters of credit and performance bonds**: their tracking, reduction, releasing and agreement preparation --- 150 bonds at any given time with such lenders as **NATIONSBANK** and **FIRST UNION BANK** valued in excess of \$15 million. This included client coordination, working closely with client superintendents, agency processing and providing updates/reporting. I developed and implemented a computerized tracking system and clerical procedures. A similar system was designed for tracking permits and processing in excess of \$½ million monthly construction invoices for Lennar.

Developed and implemented automated estimating systems to **LENNAR HOMES** specifications using Excel software for construction projects to minimize repetitive data entry/retrieval and provide savings company-wide. Created master construction contract to Lennar specifications administering construction contracts and generating a 75% time savings when preparing construction documents.

Restored a deteriorated client relationship with **WINN-DIXIE SUPERMARKETS**, a large Southeastern supermarket chain and provided assistance on 4 expansion projects including **zone change application processing**.

DEMOLITION / FLOOD HAZARD MITIGATION



While employed by Mecklenburg County Storm Water Services, I was responsible for coordinating with the acquisition manager, consultants and demolition contractors to administer the demolition of over 120 flood-prone properties acquired through various FEMA programs (HMP, FMA, PDA), mostly single family homes, but also several apartment and commercial structures. Additionally, I administered the Mecklenburg County Park & Recreation Department demolition program (for open space and greenway trails) and co-administered media relations.

Freedom Park Dam, Little Sugar Creek, NC: This dam, which was removed in fall of 2002, was a 28 feet thick, 60 feet wide, 10 feet tall, hollow-concrete structure with 3 radial sluice gates used to regulate water levels. It was built in the early 1970s as part of a park revitalization effort and to create a pond for paddleboats and other recreation as part of a "riverwalk". Removal of the structure is part of an overall restoration plan for Freedom Park and Little Sugar Creek and is expected to improve water quality (temperature and oxygen levels) and uncover prime fish habitat.

SPECIAL ASSIGNMENTS / FLOOD HAZARD MITIGATION

While employed by Mecklenburg County Storm Water Services, I was given wide latitude to create and implement various programs including:



- created a joint city-county inter-departmental training program whereby structures slated for demolition were utilized for training purposes prior to being razed by the following: Charlotte Fire Department (live burn training); Charlotte-Mecklenburg Arson Task Force (arson investigator & K-9 training); Charlotte-Mecklenburg Police Department (bomb squad training); Charlotte-Mecklenburg Police Department (SWAT training); Charlotte-Mecklenburg Police Department (drug-fugitive-weapons K-9 unit training)

- created paperless RFP / SOQ solicitation, distribution & review system for consultant submittals

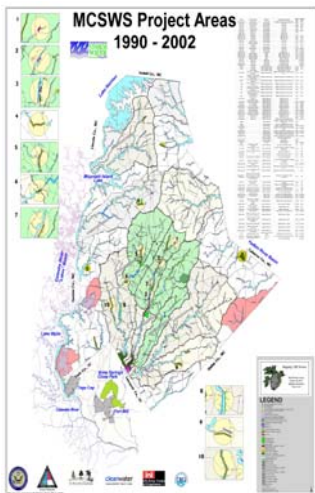


- created & implemented the creek name sign program in conjunction with adopt-a-stream program

- created working relationships with state officials and implemented a successful grant writing program (\$7± in 5 years) including contract negotiations, primarily CWMTF & NCEEP

- conceived the vision and name --- through persuasive efforts among various city-county departments --- for the watershed-based restoration effort known as Little Sugar Creek Environmental Restoration Initiative; this \$50 million program was directly responsible for successful grant applications (see above).

- created a summer-long field trip program to showcase our pre-eminent Mecklenburg County environmental restoration program for professionals & elected officials who visited from throughout the southeastern USA (stream, wetland, buffer, habitat, native vegetation)



- created a series of typical details and drawings for stream restoration projects including construction specifications, plan views, layer system, title sheet and other various digital and paper criteria

- created a GIS coverage map (using layers and data tables organized by department) and a system of updating & coordination for city-county inter-departmental staff to better plan projects, overlap efforts, identify cost savings, minimize citizen disruption, identify cost-share opportunities for grant applications, consolidate permitting

- created & executed tri-party agreements between city of Charlotte, Mecklenburg County and state of North Carolina for co-funding of projects: memorandum of understanding (MOU), project cooperative agreement (PCA), permanent conservation easement (PCE)

- conceived of, obtained, registered domain names www.stormwaterservices.com .net & .org as well as 704336RAIN.com to match customer services telephone number 704.336.RAIN

SANITARY SEWER / LIFT STATION

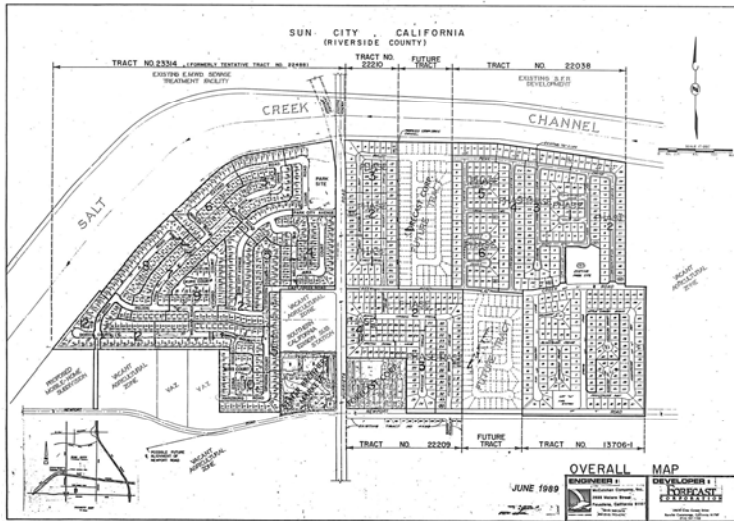


Salt Creek Channel Interceptor Sewer and Sewage Lift Station, Sun City, Riverside County (Eastern Municipal Water District): responsible for system-wide study of 1000+ acres; flow generation; trunk sewer routing alternates; reviewed final vertical and horizontal design of 1 mile of dual 15" VCP, 1000' of 21" VCP, 1000' of 48" Spirolite beneath Salt Creek Channel and 8200' of horizontal and vertical design for 42" Spirolite; complete design of non-standard 3 MGD sewage lift station and all appurtenant facilities including coordination with pump supplier and electro-mechanical engineer. (*\$750,000 construction value*)

Each of the following projects included one or more of detailed plan & profile design, hydraulic calculations, project report, alternate material analysis, tributary drainage area studies, lift station design, agency negotiations, cost estimates, contractor coordination, construction modifications, special detail design and bedding calculations (*\$4,000,000 TOTAL construction value*):

- Tract 20775, City of Corona (281 hillside lots)
- Tract 23314, Sun City, Riverside County (421 lots)
- Tract 22209, Sun City, Riverside County (123 lots)
- Tract 22210, Sun City, Riverside County (109 lots)
- Tract 22038, Sun City, Riverside County (245 lots)
- Tract 49206, City of La Canada Flintridge (48 hillside duplex)
- Parcel Map 1173, City of Baldwin Park (3-lot subdivision)
- Church of Jesus Christ of Latter Day Saints, Thousand Oaks Stake

DOMESTIC WATER



Sun City "Regional" Water System Model & Design for Tracts 22038, 22209, 22210 and 23314 (Eastern Municipal Water District): performed water system model dynamic calculations, system design and sizing including 6" to 21" ACP for approximately 5 miles of new and existing water main. (\$12,000 design fee)

Aufdenkamp Transmission Main Relocation at Santa Maria Avenue (Laguna Beach County Water District): plan and profile design for relocation of 500' of 36" diameter main feeder for Laguna Beach and Dana Point to accommodate new major street;

horizontal and vertical design; cathodic protection design; structural calculations; grading and drainage design. (\$400,000 construction value)

Aufdenkamp Transmission Main System-wide Study of Impacts from On-going Projects (Laguna Beach County Water District): project report and study of impacts from 12 separate projects; acting as agent for District, contacted all developers, engineers and contractors. (\$20,000 design fee)

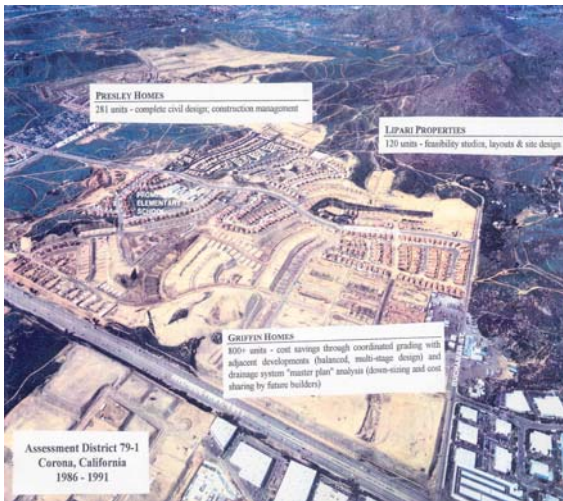
Hasley Canyon Waterline (Castaic): 1700' of 6" waterline for group of 9 private homeowners; Los Angeles County processing; homeowner meetings, presentations and coordination; vertical and horizontal alignment design; survey; right-of-way analysis; water system calculations to nearest reservoir 2 miles away. (\$50,000 construction value)

Cabazon Indian Reservation Tract 0001, Indian Sands Development, Coachella Valley, CA: domestic water system calculations, report and system layout for Riverside County approvals for over 1000 single family homes.

SITE DEVELOPMENT & GRADING

I am skilled in both steep hillside & flat subdivision layout and grading to achieve a *workable* design at an economical cost at the tentative stage of planning. My talents also include "flatland", subdivision, institutional, commercial and multi-family design for both architects and builders. My understanding of grading ordinances and their interpretation yield a workable design that meets code. I have performed grading design/review or assisted in the development of the grading, retaining wall & drainage plans for many projects. The following projects also included construction administration, all aspects of land surveying, title company coordination, contract revisions, feasibility studies (cost & cash-flow analyses), permitting, sub-contractor negotiation, zone change requests, FEMA flood plain revisions and design of all infrastructure systems:

DEVELOPERS:



- Presley Homes: Tract 20775, City of Corona, CA (281 hillside lots)
- Lipari Homes/Griffin Homes: see storm water / drainage section
- Griffin Homes/Jackson Land Corp.: Tract 26125, City of Corona, CA (121 hillside lots)
- Forecast Development Corp.: Tract 23314, Sun City, Riverside County, CA (421 lots)
- Forecast Development Corp.: Tract 22209, Sun City, Riverside County, CA (123 lots)
- Forecast Development Corp.: Tract 22210, Sun City, Riverside County, CA (109 lots)
- Forecast Development Corp.: Tract 22038, Sun City, Riverside County, CA (245 lots)
- Pulte, Shea, Kingsway, others: 30± Tracts, Southridge Village, City of Fontana, CA (1200+ lots)
- Zentmyer Development: Tract 49206, City of La Canada Flintridge, CA (48 hillside duplex)
- Ruiz Brothers Construction: Parcel Map 1173, City of Baldwin Park, CA (3-lot subdivision)
- Cantwell-Anderson Development: Olive View Equestrian Estates, Sylmar, CA (145-acre site planning)
- Cantwell-Anderson Development: Holliston, Mar Vista, Marengo Ave Apartments ALTA surveys, Pasadena
- Cantwell-Anderson Development: Tract 51155, Casas de Flores, El Sereno, Los Angeles: drainage design ALTA survey and structural analysis of existing 96" CIP drain
- Cabazon Indian Reservation: hydrology, hydraulics, water system calculations/layout for 1000+ lots

ARCHITECTS:

- Church of Jesus Christ of Latter Day Saints, Glendale, CA Stake
- Church of Jesus Christ of Latter Day Saints, Thousand Oaks, CA Stake
- Church of Jesus Christ of Latter Day Saints, Palmdale, CA Stake
- Shinji Shumeikai of America Spiritual Center, Tentative & Final Parcel Map, Pasadena, CA
- Robert Smith Residence grading & drainage plans, including waterfalls & ponds, Chatsworth, CA

PRIVATE CLIENTS:

- Loma Linda Partnership, Loma Linda, CA (FEMA Flood Insurance Rate Map revision)
- Peter Cooley, La Cañada-Flintridge, CA (6-lot hillside residential site development)
- Woody's Automotive Center, Pasadena, CA (structural plans & building permits)
- Alleghany County Industrial Park, Sparta, NC (133-acre conceptual grading plan)
- The Pinnacle Ridge, Anmore, BC, British Columbia, Canada (50-lot, 100-acre conceptual grading plan)
- Fairhaven Highlands / Chuckanut Ridge, Bellingham, WA (739-unit hilltop subdivision environ analysis)